

Customer :

customer

Customer part :

customer part

Comment :

Comment

S1=4.91

S2=6.2

Tmax=469

Tp S2=508.0

PI=0.44

HI=76

Sample =1755.80

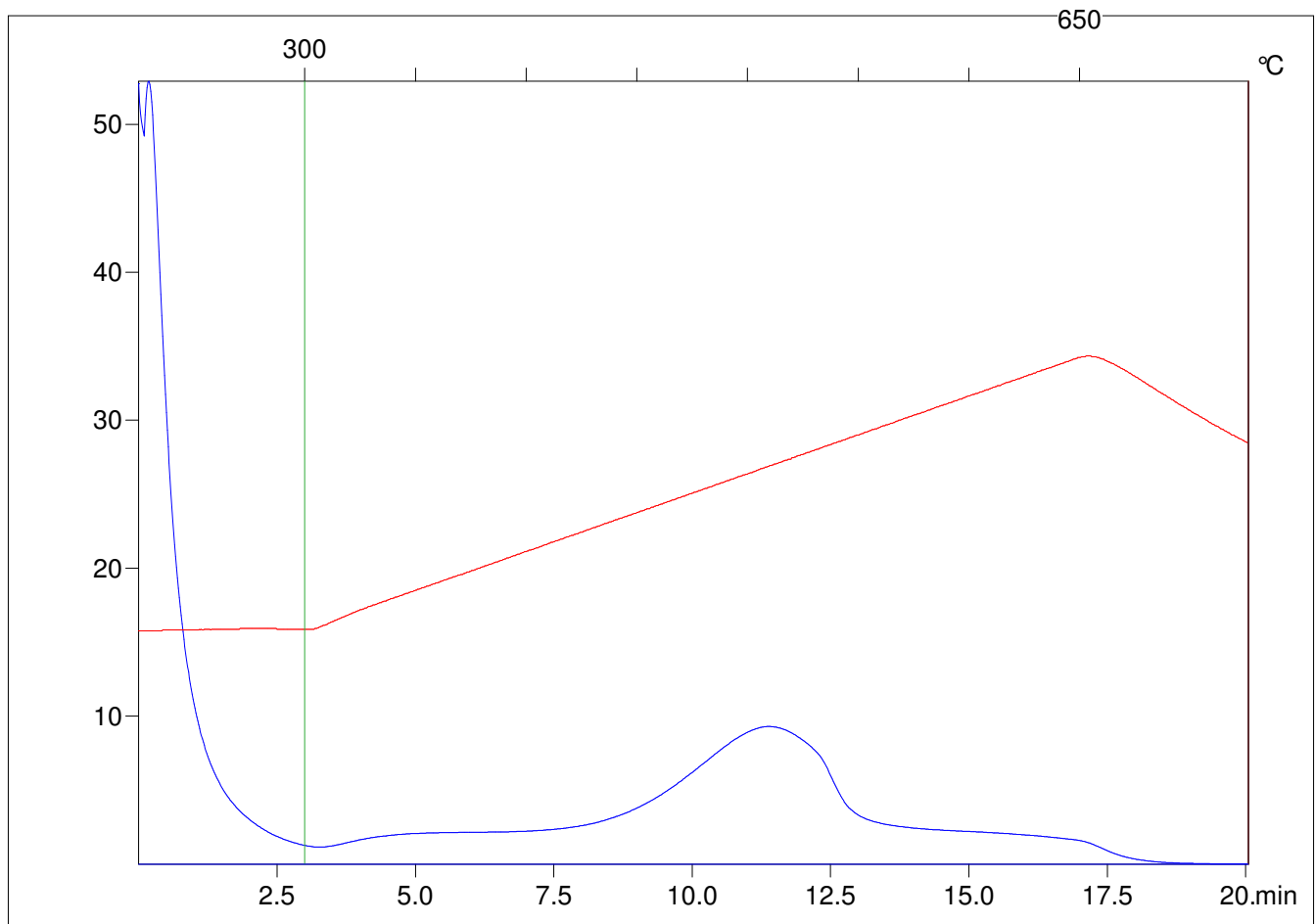
Method =Bulk Rock

Cycle=Basic

KFID(10*9)=1444

Qty =70.5

TOC=8.11



C:\VINC\PK3_1792\PK011.R00 : FID pyrolysis graphic

State

Pyro Status

Oxi Status